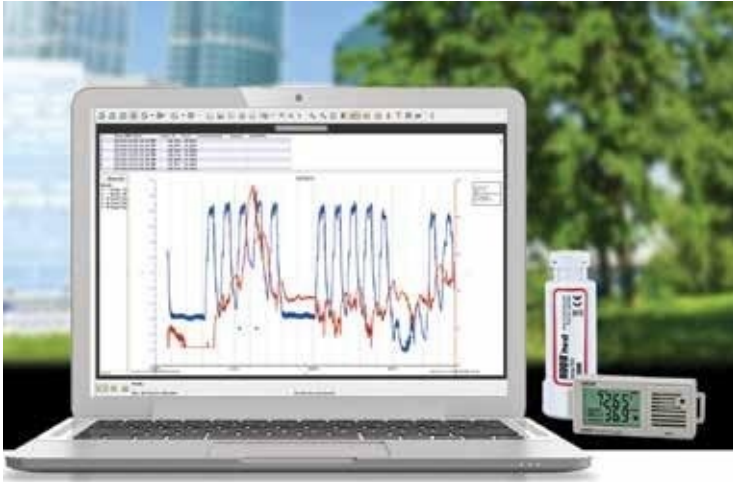


HOBOWare / HOBOWare Pro

Graphing and Analysis Software



HOBOWare is Onset's flagship setup, graphing and analysis software package for HOBOWare data loggers. It allows you to view, graph, and analyze data with point-and-click simplicity. You can easily set up your application in a matter of minutes, quickly read out and plot data, and export to spreadsheets for further analysis.

Standard Features:

- Simple menus for fast, easy logger setup and readout
- Scaling to real-world engineering units
- Presentation-quality graphs
- Easy export of data files to text format
- Free download

HOBOWare Pro Features:

- Time-saving tools for fast setup and readout
- Advanced plotting tools for more precise data analysis
- Access to Data Assistants for post-processing data

Download HOBOWare today at onsetcomp.com.

Or download your free 30-day trial of HOBOWare Pro. From setup to analysis, no other data logger software can compare to the power and simplicity of HOBOWare Pro.

HOBOWare features comparison

	HOBOWare	HOBOWare Pro
Support for all HOBOWare data loggers	✓	✓
Quickly generate presentation-quality graphs	✓	✓
Copy & paste series	✓	✓
Merge data files	✓	✓
Save modified graphs as projects	✓	✓
Easy data export to XLS, CSV, & TXT files	✓	✓
Linear & Pulse Scaling Data Assistants	✓	✓
Time-saving tools for fast setup, readout & export		✓
Data Assistants for post processing Dissolved Oxygen, Conductivity, Water Level, Growing Degree Days, Grains per Pound & kWh		✓
Ability to create pie charts		✓
Crop a series to a specific time frame		✓
Subset Statistics Tool for details within a time frame		✓
21 CFR Part11 Compliance		✓
Data Shuttle support		✓
HOBOWare node manager to support ZW Data Nodes		✓
	Free Download	

System Requirements

- Windows 10 (Home, Pro), Windows 11 (Home, Pro)
- macOS v11 (Big Sur), v12 (Monterey), v13 (Ventura)
- HOBOWare no longer needs a Java Runtime Environment on your computer. We include the JRE in HOBOWare itself.
- The most recent versions of Safari, MS Internet Explorer, MS Edge, Firefox or Google Chrome.
- Minimum screen resolution of 1024x768. Recommended screen resolution of 1280x800 or greater particularly for non-English users.
- 256+ colors
- 1.8 GHz single core CPU, 1 GB RAM
- Certain loggers (U20s, U24s, U26s) require data assistants (only available in HOBOWare Pro) to provide the most accurate data.



METRICS

Metrics GmbH • Elberfelder Str. 19-21 • 58095 Hagen
Telefon: 02331 3483086 • Telefax: 02331 3483088
E-Mail: info@metrics24.de • <https://www.metrics24.de>